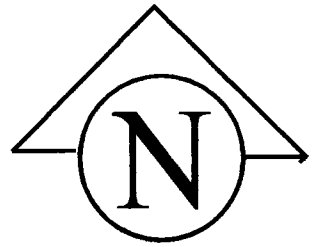
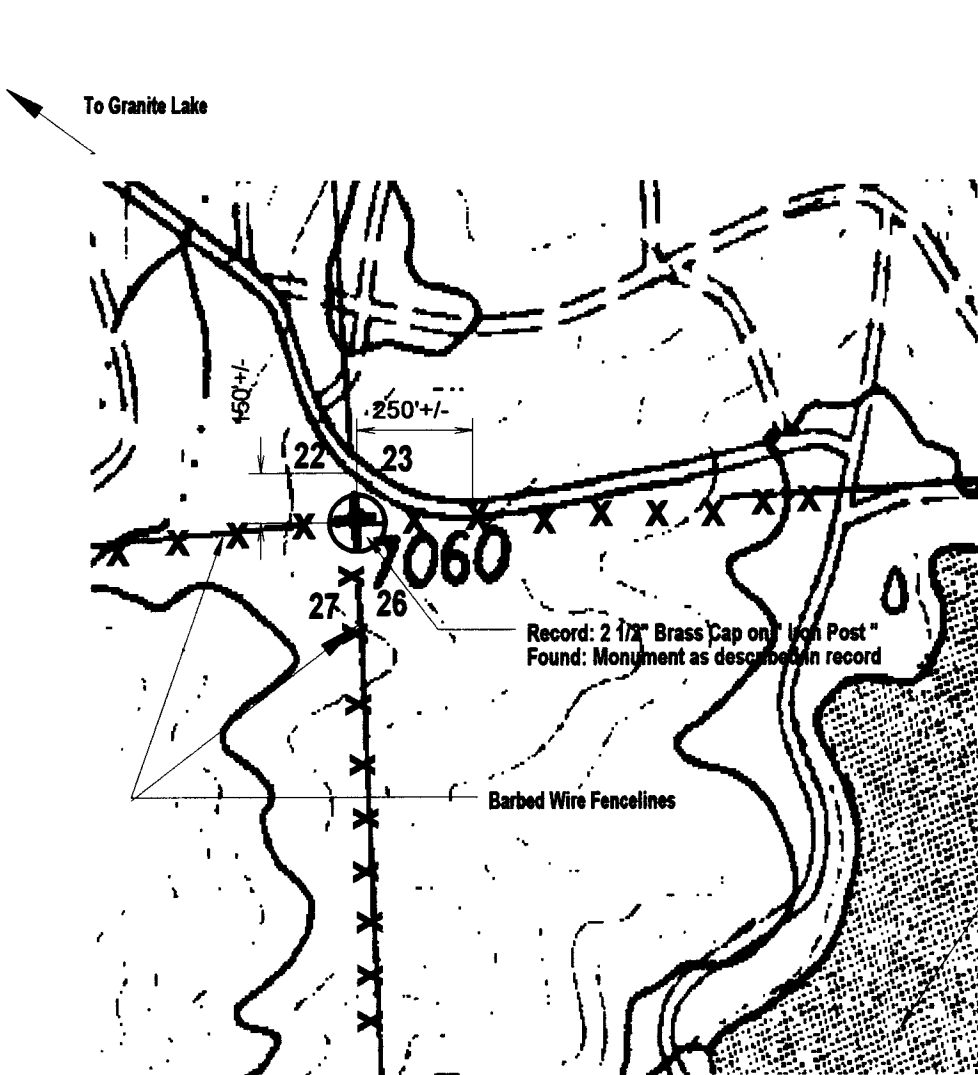


State of Wyoming Corner Record

(In compliance with the *CORNER PERPETUATION AND FILING ACT*, Wyoming Statutes, 1977, Section 36-11-101, et. seq., and the rules and Regulations of the Board of Registration for Professional Engineers and Professional Land Surveyors).

Reverse side of this form may be used if more space is needed.

Record of original survey and citation of source of historical information (if corner is lost or obliterated). Description of corner monumentation evidence found and/or monument and accessories established to perpetuate the location of this corner. Sketch of relative location of monument, accessories, and reference points with course and distance to adjacent corner(s) (if determined in this survey). Method and rationale for reestablishment of lost or obliterated corner.



No Scale
Date Prepared :
October 19, 1995

T 14 N R 70 W

To Curt Gowdy State Park
South Entry

Crystal Lake

LARAMIE COUNTY CLERK
 CHEYENNE, WY.
 '95 OCT 25 PM 1 23

1721104

Date of Field Work: Sept.-Oct., 1995

Office Reference: 9504 - BOPU Fenceline-Crystal Lake

CROSS INDEX DIAGRAM

	1	2	3	4	5	6	7	8	9	10	11	12	13	14	15	16	17	18	19	20	21	22	23	24	25
A																									
B																									
C																									
D																									
E																									
F																									
G																									
H																									
J																									
K																									
L																									
M																									
N																									
O																									
P																									
Q																									
R																									
S																									
T																									
U																									
V																									
W																									
X																									
Y																									
Z																									

Firm / Agency, Address

Cornerstone Surveying Company

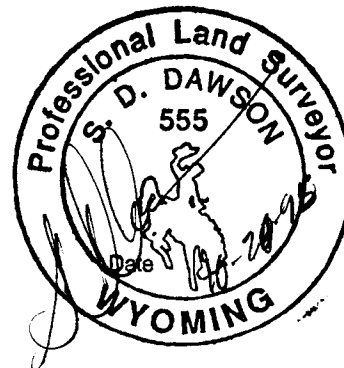
4005 Snyder Avenue

Cheyenne, Wyoming

Telephone Number 307 - 637 - 6958

This corner record was prepared by me or under my direction and supervision.

SEAL & SIGNATURE



Corner Name: NW Section Corner
SBRPEPLS/PLSW: March 1994

Section 26 T 14 N R 70 W : 6th P.M. Cross Index No. R-17

1378

BOOK 1409